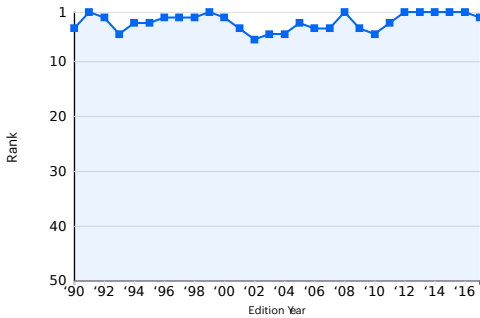




# Hawaii

**OVERALL RANK: 2** | **CHANGE: ▼1**  
**DETERMINANTS RANK: 3**  
**OUTCOMES RANK: 4**



Rank Based On: Weighted sum of the number of standard deviations each core measure is from the national average.

## STRENGTHS

- Low percentage of uninsured population
- Low prevalence of obesity
- Low preventable hospitalization rate

## CHALLENGES

- High prevalence of excessive drinking
- High incidence of Salmonella
- Low Tdap immunization coverage among adolescents

## HIGHLIGHTS

- In the past seven years, premature death decreased 6% from 6,391 to 6,031 years lost before age 75 per 100,000 population
- In the past three years, cardiovascular deaths increased 6% from 199.1 to 210.7 deaths per 100,000 population
- In the past five years, the percentage uninsured decreased 51% from 7.8% to 3.8% of the population
- In the past three years, violent crime increased 29% from 239 to 309 offenses per 100,000 population
- In the past two years, children in poverty decreased 31% from 16.9% to 11.6% of children

**WEBSITE:** [health.hawaii.gov](http://health.hawaii.gov)

| Measure   | Rating       | 2017 Value   | 2017 Rank |
|---|--------------|--------------|-----------|
| <b>BEHAVIORS</b>  |              |              |           |
| Drug Deaths (Deaths per 100,000 population)                                     | +++++        | 11.5         | 8         |
| Excessive Drinking (Percentage of adults)                                       | ++           | 20.3%        | 38        |
| High School Graduation (Percentage of students)                                 | ++           | 81.6%        | 33        |
| Obesity (Percentage of adults)  | +++++        | 23.8%        | 3         |
| Physical Inactivity (Percentage of adults)                                      | ++++         | 20.8%        | 17        |
| Smoking (Percentage of adults)  | +++++        | 13.1%        | 3         |
| <b>Behaviors * (All Behaviors)</b>  | <b>+++++</b> | <b>0.180</b> | <b>5</b>  |
| <b>POLICY</b>   |              |              |           |
| Immunizations - Adolescents (Mean z score of HPV, meningococcal and Tdap)       | ++           | -0.272       | 32        |
| Immunization HPV Females (Percentage of females aged 13 to 17)                  | +++++        | 61.5%        | 5         |
| Immunization HPV Males (Percentage of males aged 13 to 17)                      | +++++        | 46.9%        | 7         |
| Immunization Meningococcal (Percentage of adolescents aged 13 to 17)            | ++           | 75.8%        | 35        |
| Immunization Tdap (Percentage of adolescents aged 13 to 17)                     | +            | 82.2%        | 45        |
| Immunizations - Children (Percentage of children aged 19 to 35 months)          | ++++         | 75.1%        | 15        |
| Public Health Funding (Dollars per person)                                      | +++++        | \$247        | 3         |
| Uninsured (Percentage of population)  | +++++        | 3.8%         | 2         |
| <b>Policy * (All Policy measures)</b>   | <b>+++++</b> | <b>0.149</b> | <b>4</b>  |
| <b>CLINICAL CARE</b>  |              |              |           |
| Dentists (Number per 100,000 population)  | +++++        | 76.4         | 4         |
| Low Birthweight (Percentage of live births)                                     | +++          | 8.3%         | 29        |
| Mental Health Providers (Number per 100,000 population)                         | +++          | 229.5        | 22        |
| Preventable Hospitalizations (Discharges per 1,000 Medicare enrollees)          | +++++        | 23.3         | 1         |
| Primary Care Physicians (Number per 100,000 population)                         | +++++        | 179.9        | 9         |
| <b>Clinical Care * (All Clinical Care measures)</b>                             | <b>+++++</b> | <b>0.128</b> | <b>7</b>  |
| <b>COMMUNITY &amp; ENVIRONMENT</b>  |              |              |           |
| Air Pollution (Micrograms of fine particles per cubic meter)                    | +++++        | 5.9          | 6         |
| Children in Poverty (Percentage of children)                                    | +++++        | 11.6%        | 7         |
| Infectious Disease (Mean z score of chlamydia, pertussis and Salmonella)        | +++          | 0.040        | 29        |
| Chlamydia (Cases per 100,000 population)  | ++           | 498.3        | 37        |
| Pertussis (Cases per 100,000 population)  | ++++         | 3.3          | 14        |
| Salmonella (Cases per 100,000 population)                                       | ++           | 20.1         | 37        |
| Occupational Fatalities (Deaths per 100,000 workers)                            | +++++        | 3.9          | 10        |
| Violent Crime (Offenses per 100,000 population)                                 | +++          | 309          | 21        |
| <b>Community &amp; Environment * (All Community &amp; Environment Measures)</b> | <b>+++++</b> | <b>0.183</b> | <b>4</b>  |
| <b>ALL DETERMINANTS</b>   |              |              |           |
| <b>All Determinants * (All Determinants)</b>                                    | <b>+++++</b> | <b>0.641</b> | <b>3</b>  |
| <b>OUTCOMES</b>   |              |              |           |
| Cancer Deaths (Deaths per 100,000 population)                                   | +++++        | 161.0        | 3         |
| Cardiovascular Deaths (Deaths per 100,000 population)                           | +++++        | 210.7        | 4         |
| Diabetes (Percentage of adults)   | +++          | 10.5%        | 25        |
| Disparity in Health Status (Percentage point difference)                        | ++           | 28.4%        | 31        |
| Frequent Mental Distress (Percentage of adults)                                 | +++++        | 9.2%         | 3         |
| Frequent Physical Distress (Percentage of adults)                               | +++++        | 9.9%         | 8         |
| Infant Mortality (Deaths per 1,000 live births)                                 | ++++         | 5.2          | 15        |
| Premature Death (Years lost before age 75 per 100,000 population)               | +++++        | 6,031        | 7         |
| <b>All Outcomes * (All Outcomes)</b>  | <b>+++++</b> | <b>0.204</b> | <b>4</b>  |
| <b>OVERALL</b>  |              |              |           |
| <b>Overall * (Overall)</b>  | <b>+++++</b> | <b>0.845</b> | <b>2</b>  |

| RATING RANK  |
|--------------|
| +++++ 1 - 10 |
| ++++ 11 - 20 |
| +++ 21 - 30  |
| ++ 31 - 40   |
| + 41 - 50    |

\* Value indicates z score. Negative scores are below US value; positive scores are above US value. For complete definitions of measures including data sources and years, see "[Appendix: Core Measures](#)".

## SUPPLEMENTAL MEASURES

| Measure   | Rating | 2017 Value | 2017 Rank |
|---|--------|------------|-----------|
| Binge Drinking (Percentage of adults)                                   | ++     | 18.6%      | 39        |
| Cholesterol Check (Percentage of adults)                                | +      | 73.2%      | 44        |
| Chronic Drinking (Percentage of adults)                                 | +      | 7.9%       | 46        |
| Colorectal Cancer Screening (Percentage of adults aged 50 to 75)        | +++++  | 73.7%      | 6         |
| Dedicated Health Care Provider (Percentage of adults)                   | +++++  | 84.7%      | 10        |
| Dental Visit, Annual (Percentage of adults)                             | +++++  | 72.7%      | 7         |
| Disconnected Youth (Percentage of teens and young adults aged 16 to 24) | ++++   | 10.8%      | 16        |

|  |       |          |    |
|--|-------|----------|----|
| Heart Disease (Percentage of adults)                               | +++++ | 3.6%     | 6  |
| High Blood Pressure (Percentage of adults)                         | +++   | 32.0%    | 28 |
| High Cholesterol (Percentage of adults)                            | +++   | 36.3%    | 25 |
| High Health Status (Percentage of adults)                          | ++    | 48.9%    | 38 |
| Income Inequity (Gini Ratio)                                       | +++++ | 0.442    | 5  |
| Injury Deaths (Deaths per 100,000 population)                      | +++++ | 50.5     | 4  |
| Insufficient Sleep (Percentage of adults)                          | +     | 42.8%    | 50 |
| Median Household Income (Dollars per household)                    | +++++ | \$72,133 | 6  |
| Neighborhood Amenities (Percentage of children aged 0-17)          | +++++ | 52.5%    | 5  |
| Poor Mental Health Days (Mean number of days)                      | +++++ | 3.1      | 2  |
| Poor Physical Health Days (Mean number of days)                    | +++++ | 3.5      | 10 |
| Seat Belt Use (Percentage of adults)                               | +++++ | 92.9%    | 2  |
| Six+ Teeth Extractions (Percentage of adults aged 45 to 64)        | +++++ | 10.9%    | 1  |
| Stroke (Percentage of adults)                                      | +++   | 3.0%     | 23 |
| Suicide (Deaths per 100,000 population)                            | ++++  | 14.1     | 17 |
| Underemployment Rate (Percentage of civilian labor force)          | +++++ | 7.5%     | 8  |
| Unemployment Rate, Annual (Percentage of the civilian labor force) | +++++ | 3.0%     | 3  |
| Vegetables (Mean number of vegetables per day)                     | +     | 2.1      | 41 |
| Water Fluoridation (Percentage of population served)               | +     | 11.7%    | 50 |

| RATING RANK |         |
|-------------|---------|
| +++++       | 1 - 10  |
| ++++        | 11 - 20 |
| +++         | 21 - 30 |
| ++          | 31 - 40 |
| +           | 41 - 50 |

## Smoking



**13.1%**



SINCE 2016, SMOKING\* **DECREASED**  
**7.1% FROM 14.1% TO 13.1%**

\* Percentage of adults

## Obesity



**23.8%**



SINCE 2016, OBESITY\* **INCREASED**  
**4.8% FROM 22.7% TO 23.8%**

\* Percentage of adults

## Uninsured



**3.8%**



SINCE 2016, UNINSURED\*  
**DECREASED 19.1% FROM 4.7% TO**  
**3.8%**

\* Percentage of population

## Drug Deaths



**11.5**



SINCE 2016, DRUG DEATHS\*  
**INCREASED 2.7% FROM 11.2 TO 11.5**

\* Deaths per 100,000 population

## Cardiovascular Deaths



**210.7**



SINCE 2016, CARDIOVASCULAR  
DEATHS\* **INCREASED 2.0% FROM**  
**206.6 TO 210.7**

\* Deaths per 100,000 population

## Premature Death



**6,031**



SINCE 2016, PREMATURE DEATH\*  
**INCREASED 2% FROM 5,898 TO**  
**6,031**

\* Years lost before age 75 per 100,000 population



## Top 5 States

**1: MASSACHUSETTS**



**2: HAWAII**



**3: VERMONT**



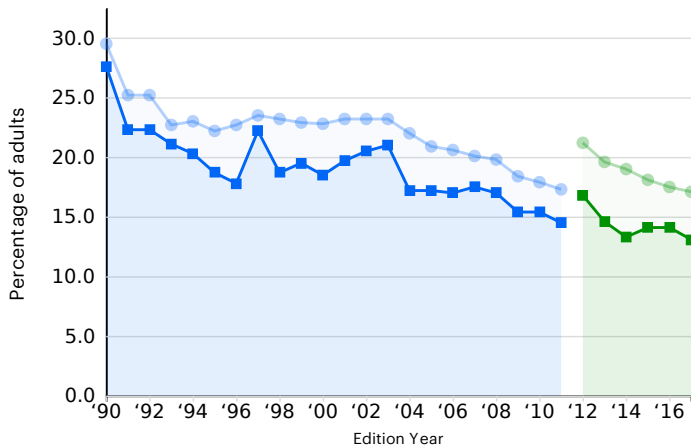
**4: UTAH**



**5: CONNECTICUT**



## Smoking



Percentage of adults who are smokers (reported smoking at least 100 cigarettes in their lifetime and currently smoke every or some days) (pre-2011 BRFSS methodology)

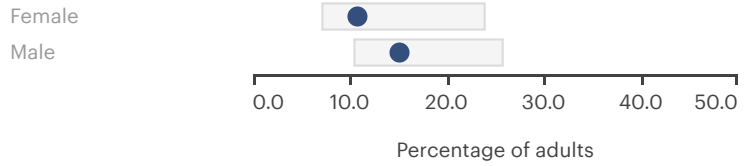
Percentage of adults who are smokers (reported smoking at least 100 cigarettes in their lifetime and currently smoke every or some days)

■ Hawaii ● United States

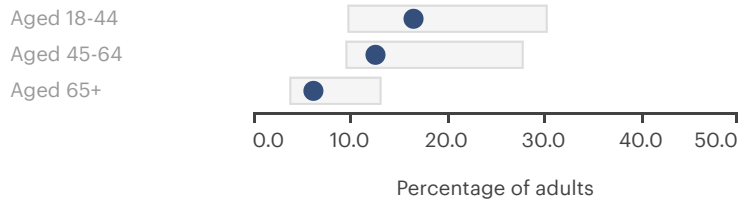
Smoking is the leading cause of preventable death. Annually, more than 480,000 people die from cigarette smoking, including nearly 42,000 deaths from secondhand smoke exposure. More than 16 million Americans are living with a smoking-related disease, which can damage nearly every organ and potentially cause respiratory disease, heart disease, stroke, cancer, preterm birth, low birthweight and premature death. Smoking prevalence has decreased in all 50 states over the past five years, but it has increased among adults with a household income less than \$25,000 in North Dakota, Missouri and New Hampshire. Direct medical expenditures attributed to smoking exceed \$170 billion annually.

□ Range of Values for all States ● HI Value

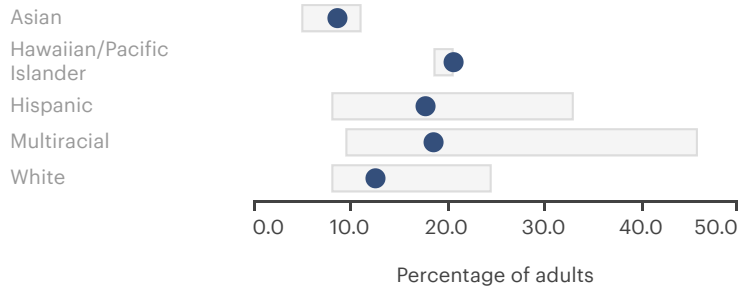
### GENDER



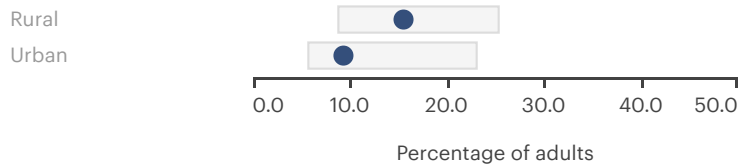
### AGE



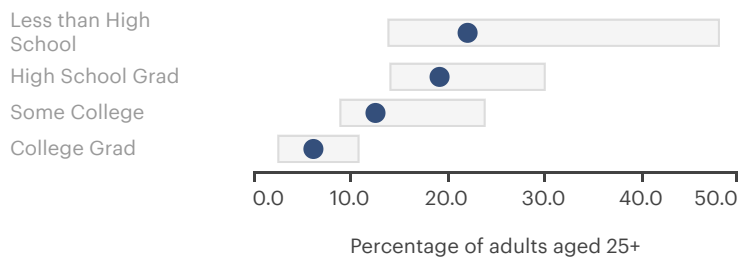
### RACE/ETHNICITY



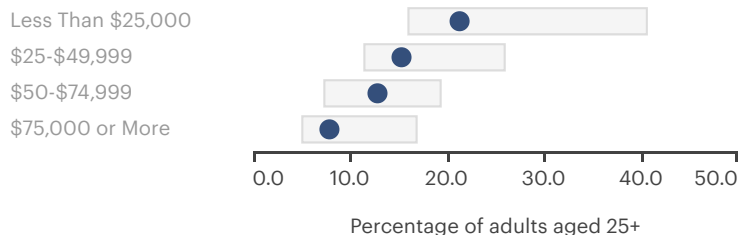
### URBANICITY



### EDUCATION



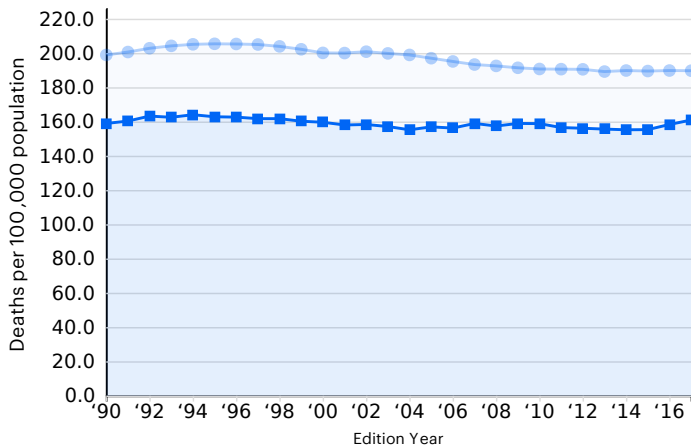
### INCOME



Data suppression rules are as defined by the original source.



## Cancer Deaths



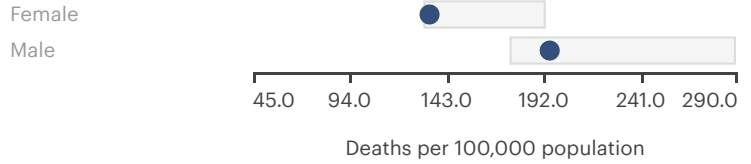
Age-adjusted number of deaths due to all causes of cancer per 100,000 population

Hawaii United States

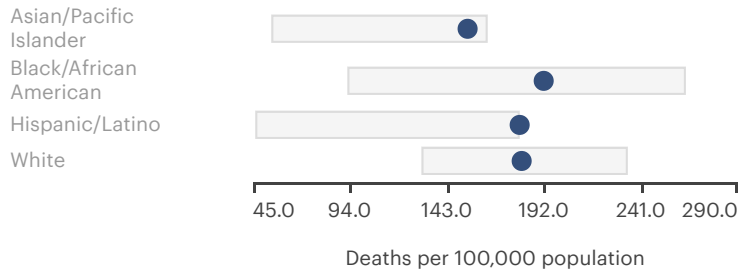
Cancer is the second-leading cause of death. More than 1.6 million new cancer cases and 595,000 cancer deaths occur annually. Breast, prostate, lung, colorectal and pancreatic cancer accounted for 47 percent of all U.S. cancer deaths in 2015. Lung cancer accounted for 27 percent. Avoiding tobacco use is best way to reduce cancer deaths. Smoking is responsible for at least 30 percent of cancer deaths. Deaths from breast cancer, colorectal cancer, and cervical cancer may be avoided through screening programs that detect cancer in early stages while it is most susceptible to treatment. The total of all health care costs associated with cancer was \$87.8 billion in 2014.

Range of Values for all States HI Value

### GENDER

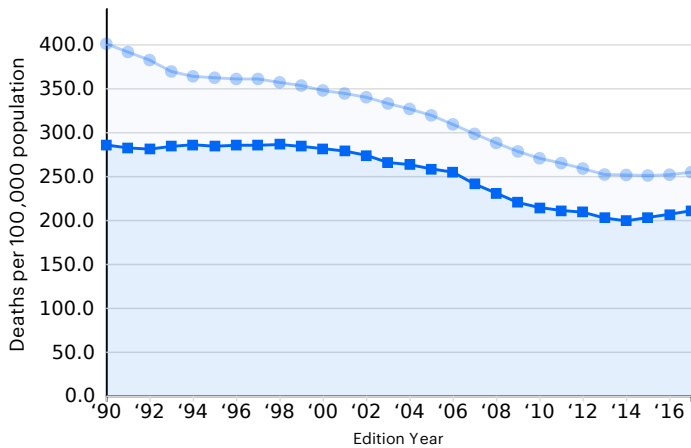


### RACE/ETHNICITY



Data suppression rules are as defined by the original source.  
Race and ethnicity populations are as defined by the original source.

## Cardiovascular Deaths



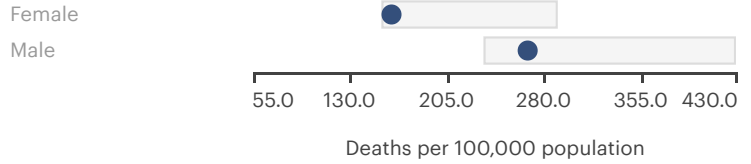
Age-adjusted number of deaths due to all cardiovascular diseases including heart disease and stroke per 100,000 population

■ Hawaii ● United States

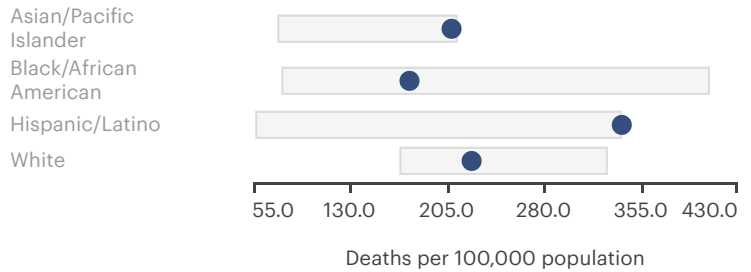
Cardiovascular deaths include deaths from heart disease, stroke, hypertension, heart attack and heart failure. Heart disease causes one in every four U.S. deaths and is the leading cause of death in both men and women. Stroke is the fifth-leading cause of death. Cardiovascular deaths vary by race and ethnicity. Non-Hispanic blacks have nearly twice the rate of avoidable deaths from heart disease, stroke and hypertensive disease as non-Hispanic whites. Cardiovascular disease is treatable and may be prevented by maintaining a healthy weight, eating healthy, participating in physical activity, limiting alcohol and avoiding tobacco. Cardiovascular disease is responsible for 17 percent of medical spending and 30 percent of Medicare spending.

Range of Values for all States HI Value

### GENDER



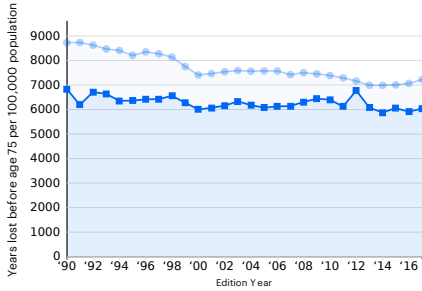
### RACE/ETHNICITY



Data suppression rules are as defined by the original source. Race and ethnicity populations are as defined by the original source.



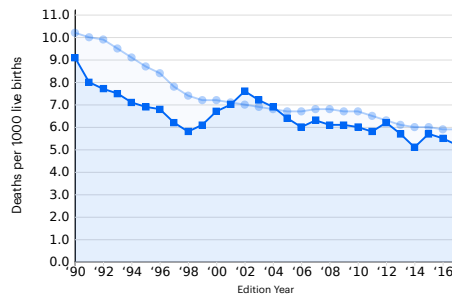
## Trend: Premature Death, Hawaii, United States



Number of years of potential life lost before age 75 per 100,000 population

■ Hawaii ● United States

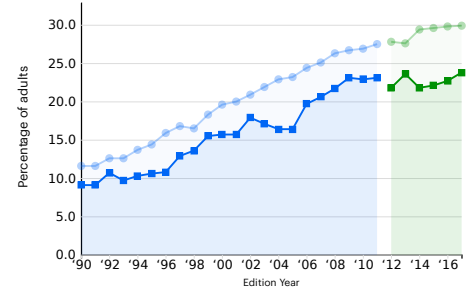
## Trend: Infant Mortality, Hawaii, United States



Number of infant deaths (before age 1 year) per 1,000 live births

■ Hawaii ● United States

## Trend: Obesity, Hawaii, United States

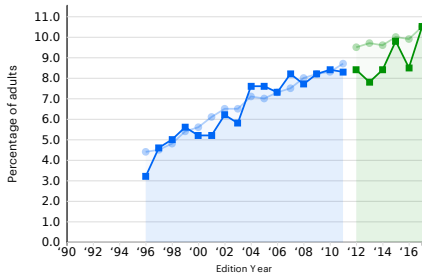


Percentage of adults with a body mass index of 30.0 or higher based on reported height and weight (pre-2011 BRFSS methodology)

Percentage of adults with a body mass index of 30.0 or higher based on reported height and weight

■ Hawaii ● United States

## Trend: Diabetes, Hawaii, United States



Percentage of adults who reported being told by a health professional that they have diabetes (excludes prediabetes and gestational diabetes) (pre-2011 BRFSS methodology)

Percentage of adults who reported being told by a health professional that they have diabetes (excludes prediabetes and gestational diabetes)

■ Hawaii ● United States